

Over the Rainbow

Through November 13, 2023
Centre Pompidou | Paris, France

Bringing together more than five hundred artworks and documents, mainly from the Centre Pompidou collection, this exhibition sets out to show how, since the beginning of the 20th century, artists have contributed to transforming the representation of the LGBTQIA+ communities.



Cecily Brown: Death and the Maid

Through December 3, 2023
The Metropolitan Museum of Art | New York, NY

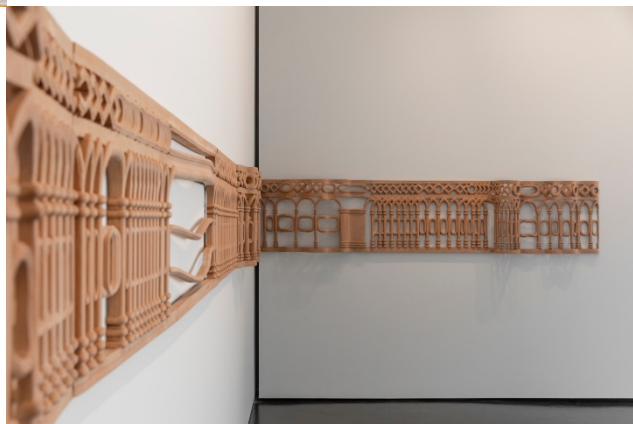
This is the first full-fledged museum survey of Brown's work in New York since she made the city her home, the exhibition assembles a select group of some fifty paintings, drawings, sketchbooks, and monotypes from across her.



Asma Belhamar: Solid Void

Through December 31, 2023
421 | Abu Dhabi, UAE

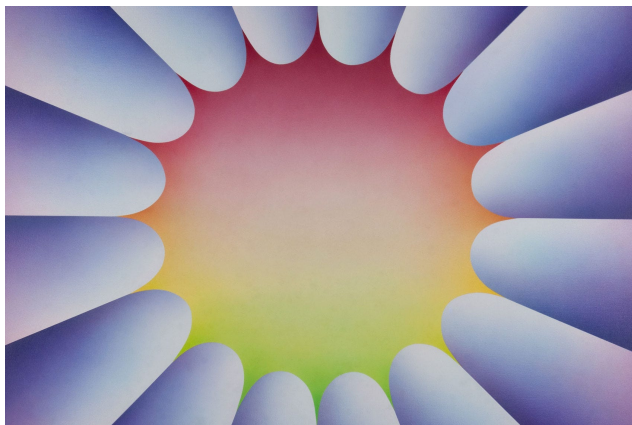
In her latest solo exhibition, acclaimed artist Asma Belhamar unveils a significant collection of pieces inspired by the rich architectural heritage of the UAE. Delving into the nation's history through its constructed environments, Belhamar draws inspiration from three evocative scenes depicted in the iconic 1970s music video 'Esh Halkom Ya Arab'.



Judy Chicago: Herstory

Through January 14, 2024
New Museum | New York, NY

Spanning Judy Chicago's sixty-year career and encompassing painting, sculpture, installation, drawing, textiles, photography, stained glass, needlework, and printmaking, the exhibition will place six decades of Chicago's work in dialogue with work by other women across centuries in a unique installation.





No Feeling Is Final.

Through January 28, 2024

Kunsthalle Wien | Vienna, Austria

The Skopje Solidarity Collection reflects modern art history in Western capitals, offering insight into the cultural and architectural heritage of a nearby neighbor. The exhibition invites us to feel and reimagine solidarity in a time of European instability and aggression.

Nan Goldin: This Won't End Well

Through January 28, 2024

Stedelijk Museum | Amsterdam, The Netherlands

Over four decades, Goldin has created diverse slideshows, from intimate portraits to family narratives, enriched with moving images, music, and archival material. At the Stedelijk, she unveils six rooms filled with thousands of photos, accompanied by music, voice-overs, and archival material.



Henry Taylor: B Side

Through January 28, 2024

Whitney Museum of American Art | New York, NY

Through painting, drawing, sculpture, and installation, this retrospective celebrates an artist widely appreciated for his unique aesthetic and social vision. Taylor's portraits are populated by friends, relatives, strangers, athletes, politicians, and entertainers.



Tarek Atoui: Waters' Witness

Through February 4, 2024

Museum of Contemporary Art | Sydney, Australia

Atoui's documents the acoustic identities of port cities that are deeply connected to their harbors. Recording sounds close to the sea and under the water, Atoui produces a unique score for each city which becomes part of the work's growing soundscape and a source of inspiration for new sound sculptures.





Desire, Knowledge, and Hope (with Smog)

Through April 7, 2024

The Broad | Los Angeles, CA

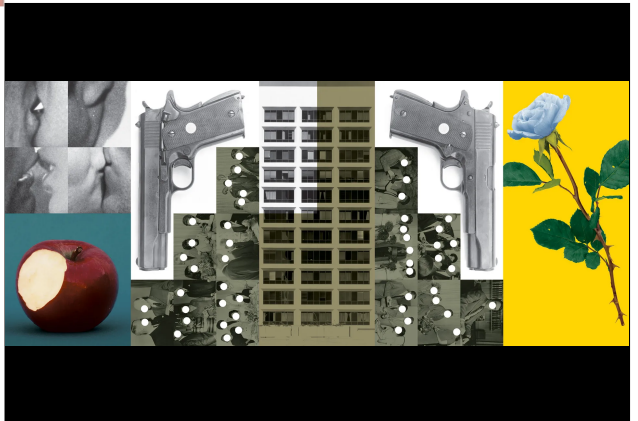
The exhibition showcases LA-based artists' reflections on the city's dynamics and societal issues. It includes 60+ works across generations and mediums. The collection delves into the contrast between LA's idealized image and gritty reality, featuring artists like Ed Ruscha and Mark Bradford.

Philip Guston

Through February 25, 2024

Tate Modern | London, UK

Guston was a complex artist who took inspiration from the nightmarish world around him to create new and surprising imagery. This exhibition explores how his paintings bridged the personal and the political, the abstract and the figurative, the humorous and the tragic.



Going Dark: The Contemporary Figure at the Edge of Visibility

Through April 7, 2024

Solomon R. Guggenheim Museum | New York, NY

The exhibition brings together a multigenerational group of artists who engage the “semi-visible” figure—representations that are partially obscured. In its inherent tension between clarity and occlusion, the semi-visible figure is a site of great material complexity and experimentation.



Back to the Future: An Exploration of Contemporaneity in Korean Contemporary Art

Through May 26, 2024

National Museum of Modern and Contemporary Art | Seoul, Korea

The exhibition is organized with the intention of sharing artwork from the collection of the museum with the public. Covering artworks acquired by the museum over a five-year period, from 2018 to 2022, it thoroughly examines the characteristics of noteworthy acquisitions.

**BACK
TO
THE
FUTURE**